



SHEAR MAGIC®

INSTRUCTION MANUAL

Colt 120 Clipper

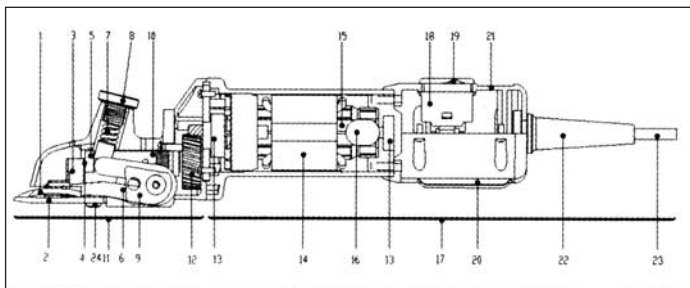


PLEASE REFER TO THIS INSTRUCTION MANUAL BEFORE USE

PO BOX 260 BOTANY NSW 1455
Email: info@shearmagic.net.au
Website: www.shearmagic.net.au
ABN 31 128 341 980

Ph: (02) 9700 0800
Fax: (02) 9700 1171

COMPONENT NAMES



- | | | |
|-----------------------------|-------------------------|-----------------------|
| 1 Upper Blade | 9 Centring Bush | 18 Capacitor |
| 2 Lower Blade | 10 Crank Spindle Sleeve | 19 ON / OFF Switch |
| 3 Driving carrier | 11 Clipper Head | 20 Air Filter |
| 4 Crank Drive Block | 12 Cogwheel | 21 Nameplate |
| 5 Crank Spindle | 13 Bearings | 22 Anti-kink Sleeve |
| 6 Laminated Springs | 14 Stator | 23 Cable |
| 7 Pressure Spring | 15 Rotor | 24 Blade Fixing Screw |
| 8 Pressure Adjustment Screw | 16 Carbon Brushes | |
| | 17 Motor Section | |



IMPORTANT SAFEGUARDS

Listed below are those precautions regarded to be essential for the safe use of the appliance.

1. Read the user instructions carefully.
2. Unplug when the clipper is not in use and before cleaning.
3. Do not operate the clipper with a damaged cord or after the appliance has been dropped or damaged in any manner. If damage is suspected, return the appliance to a Shear Magic Service Agent (See below).
4. Do not use the clipper with an extension cord unless the cord has been checked and tested by a qualified electrician.
5. Do not allow the cord or extension cord to contact sharp edges or damp ground.
6. Close supervision is necessary when the clipper is used near children.
7. Do not use the clipper with worn or badly adjusted blades.
8. Do not use the clipper with hot blades.
9. Never immerse the clipper in water or other liquids, but wipe the appliance with a cloth to clean external surfaces.
10. Do not use the clipper on a wet animal or under wet conditions.

SAVE THESE INSTRUCTIONS

FOR AUTHORISED SERVICE AGENTS CONTACT:

Botany Bay Imports Exports Pty Ltd

www.botanybayimports.com.au

email: info@botanybayimports.com.au

PO Box 260 BOTANY NSW 1455

Ph: 02 9700 0800 Fax: 02 9700 1171

LARGE ANIMAL CLIPPER

SETTING THE BLADES:

Check the setting of the blades to be sure they are in the correct position. When correctly set, the top blade should be set back 1.5mm to 2.0mm from the ridge on the bottom blade (Fig 1).

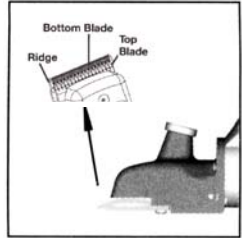


Figure 1

ADJUSTING THE TENSION:

Tension is applied to the top blade of the animal clipper by a flexible tension principle that eliminates all friction on top of the cutting blade. Underneath the tension screw plate is an equalising cross bar which supplies pressure on two sets of leaf springs. This presses the top blade down against the lower blade to give the best possible cutting tension.



Figure 2

The clipper will not cut freely with a light tension, but tension should not be so loose as to let hair or dirt get in between the cutting surfaces of the blades. Excessively tight tension will dull the blades quickly. Excessive tight tension could snap the yoke assembly springs. Too much tensioning can also burn the motor, and these are not covered under warranty if over tensioned. Cutting surfaces should be kept clean and oiled while clipping. At the beginning when the blades are too sharp, tension should be lightly applied. As the blades begin to dull, tension should be increased. When the tension knob is tightened as far as it will go and the blades refuse to cut, they must be sharpened.

To adjust the tension, turn the tension knob counter-clockwise until resistance is felt. Do not force the knob against the resistance. Rotate the tension knob clockwise; approximately 2-3 complete turns until a light resistance is felt. Continue turning one-half turns. The tension knob should then be correctly adjusted to start clipping.

BEFORE USE APPLY OIL IN THE OPENINGS SHOWN IN FIGURE 2 AND TO THE FRICTION POINTS OF THE BLADES. REPEAT OILING EVERY 10 MINUTES DURING USE.

BEFORE BEGINNING TO CLIP

Make sure the switch on the side of the clipper is in the "OFF" position. Then insert the plug into an electrical outlet. Slide the switch to the "ON" position and begin clipping.

MAINTENANCE

OILING AND CLEANING THE BLADES:

Keep the clipper blades oiled and clean well while clipping. When clipping is completed, remove the blades and wash them in Blade Wash. Wipe the blades and the other parts and secure cord and place in original carton with clipping head to prevent oil from seeping down the armature shaft into the motor.

CLEANING THE AIR FILTER:

Ensure that the air filter is free of hair and dirt.

The hair and dirt that collect on the filter screen must be frequently removed so that air can freely pass through the screen to cool the motor.

IMPORTANT

**Do not remove the head from motor housing.
Contact an authorised service centre for service**

RESHARPENING:

Sharp blades, combs and cutters are essential for good clipping and shearing. Dull blades must be sharpened with special grinding discs. These discs and custom sharpening facilities are available through:

WE RECOMMEND:

Botany Bay Imports Exports Pty Ltd
PO Box 260 BOTANY NSW 1455
Phone: 02 9700 0800 Fax: 02 9700 1171
Email: info@botanybayimports.com.au
www.botanybayimports.com.au

MAINTENANCE

1. Keep the motor drive and clipping heads clean. It is recommended that you remove the blades after use and clean them thoroughly.
2. Lubricate the heads and blade cutting surfaces while in use and after use.
3. Keep the air filter free of hair and dirt.
4. Keep blades, comb and cutter sharp for maximum efficiency and long life.

PROFESSIONAL CLIPPER BLADE CARE

Lengthens the Life of Clipper Blade Sets

FOR BEST RESULTS

1. Before you start clipping, apply a thin film of clipper oil to the matting faces of the cutting blades and tension spring guide.
2. If you have new blades that do not seem to cut right, it may be that the factory-applied preservative used to inhibit rust has congealed. To remedy this, with the clipper running, submerge only the cutting blades in specialised Blade Wash. Wipe the outside surface of the blades dry with a clean dry cloth and begin clipping again.
3. During the time you are clipping, use coolant occasionally. The primary benefit will be to cool the cutting blades and provide some lubrication.
4. If during the clipping operation you find the blade starts to "drag" or "streak", it could be that hair has accumulated between the upper and lower blades. To remedy this, with the clipper running, submerge the cutting blades in blade wash. Wipe the outside surface of the blades dry with a clean dry cloth and begin clipping again.
5. If after submerging in blade wash and if your blade is still not cutting properly, it is possible that very fine hair did not wash out from between the blades. If this is the case, remove the

upper blade by sliding it out from under the tension spring (do not loosen tension spring screws) and wiping the mating surfaces of the blades clean. Slide the upper blade back into position, re-assemble back on the clipper and apply a light film of oil to the blades (preferably with the clipper running).

6. After grooming, submerge the cutting blades in Blade Wash. Wipe dry. Use Spray Disinfectant liberally on the cutting blades. Wipe dry with a clean cloth and apply a thin film of Oil before grooming again.

CLIPPING THE HORSE

Never turn on the motor of an animal clipper close to the horse, especially where the horse cannot see it. Introduce it to the horse and condition the horse to the new sound.

To introduce a horse to an animal clipper, hold the unit with the switch OFF, close enough to the horse for the horse to see and smell it, before starting to clip.

It may be less disturbing to the animal to begin body clipping on the left shoulder. He is probably accustomed to being handled on the left side and to being touched on the shoulder or neck.

Certain areas of the horse will require special attention – between the front legs, the face, and the legs. There are folds of skin where the leg joins the body. When clipping this area, smooth the skin with your free hand. Smaller clippers may be necessary for clipping the face, ears, and around the fetlocks.

The skin of the horse is very sensitive. Should the blades become too hot, they may burn or frighten the horse. Lubricate the clippers frequently.

For more information visit: www.shearmagic.net.au

THE SHEAR MAGIC ONE YEAR WARRANTY

All Shear Magic clippers come with a full one year warranty from date of purchase against any manufacturing fault.

As you would expect, the warranty does not cover the following:

- Normal wearing parts.
- Repairs or disassembly attempted by anyone other than an authorised service centre.
- Repairs made due to normal wear and tear, abuse, improper maintenance, or dropping.
- Any alterations made to the tool.
- Damage due to blade coolants or other chemicals.
- Damage resulting from shipping or transit.

For warranty work, send proof of purchase or receipt along with equipment to the place of purchase. Before sending, please check our trouble shooting guide online at www.shearmagic.net.au to ensure it is not a common or easy to solve problem.

Inward postage is to be paid by the customer. Return postage will be paid on all warranty repairs. As part of all repairs, blades will also be sharpened for a nominal charge, as this is the most common cause of poor performance.

FREE EXTENDED WARRANTY

Warranty registration on the internet or via return of the warranty registration card is required within 30 days (thirty days) of the purchase date for coverage of the equipment. **Register online and receive an additional 6 month motor warranty to 18 months.** Visit www.shearmagic.net.au

Shear Magic Warranty Registration: PO Box 260 BOTANY NSW 1455

SERVICE INFORMATION

If maintenance service or service under warranty is required forward the product to: Place of purchase or Botany Bay Imports Exports Pty Ltd - PO Box 260 BOTANY NSW 1455. Phone: 02 9700 0800, Fax: 02 9700 1171.

Email: info@botanybayimports.com.au

When returning the product for service or warranty please ensure the following:

- Postage is prepaid
- Use sturdy packaging to protect the product against damage in transit - such damage is not covered by the warranty
- **Include your name, address and proof of purchase**
- **Provide a detailed description of the fault**
- When sending a clipper **do send the blades** - but not attached to the clipper to avoid damage in transit.

Product: **Shear Magic**

Model: **Colt 120 (Large Animal Clipper)**

Customer Name: _____

Address: _____

Phone: _____

Email: _____

Date of Purchase: _____

Reseller: _____

